



Image: Detail of Crossing (2023) by Jeremy Sharma

## PRESS RELEASE

### RECENT PAINTINGS

**A Solo Exhibition by Jeremy Sharma**

**13 Jan – 9 Feb 2024**

Address: CT Hub 2, 114 Lavender Street, Unit 05-72, S. 338729

Gallery Hours: Tues – Sat, 12 noon – 7 pm

Sun, 12 noon – 5 pm

Wed by appointment only

Mon, Tues, PH: Closed

Since returning to painting towards the end of the Covid pandemic after more than ten years of absence, Jeremy Sharma has re-discovered a newfound urgency and intimacy in its representational form. Sharma's debut solo exhibition at Haridas contemporary features fifteen new paintings.

His recent body of work addresses painting's porosity to apprehend images from various sources (where digitality and screen captures have become ubiquitous), albeit belatedly, in a serial linen and stretcher format that delivers its subject from a mediated world. In selecting an image, he looks for effects, qualities and values that elicit interest to make a painting. He then acts upon them by extracting, cropping, reducing, magnifying or flattening the image for printing, to paint from.

His subject then becomes one of seeing: a painting's object and intermediality; its internal logic; its pictorial construction; its emphasis on surface and touch; and its semblance of life. However, painting here is also interested in what is not seen but thought and felt: its peripheries; its silence; and its capacity—to desire, resist, linger upon, probe and take hold of.

An opening reception will be held at the gallery on 13 Jan 2024, 5 – 8 pm as part of **Singapore Art Week 2024**. Artist will be present.

Part of





# HARIDAS CONTEMPORARY

Haridas Contemporary is a gallery founded by Christiaan Haridas that aims to support and grow alongside Singapore's burgeoning contemporary art scene. The gallery endeavors to create a home for emerging and mid-career Singapore and Singapore-based artists, while maintaining a satellite program with regional artists.

With 15 years of experience in the Southeast Asian art market, Christiaan hopes to advocate for promising art practices that are sensitively crafted and offer interesting entry-points into the stories and concerns of contemporary life.

The gallery is committed to supporting artists throughout their artistic careers by seeding opportunities for exhibition, dialogue, and professional counsel. Haridas Contemporary will rally for exciting local practices to be recognised across regional and international platforms.



**Jeremy Sharma (b. 1977)** is an artist based in Singapore. He works with painting, writing and moving images.

He received his BA (Fine Art) from the RMIT (2003) and an MA (Fine Art) from the Open University (2006). Career highlights include solo exhibitions and presentations 'Spectrum Version 2.2' with Sullivan+Strumpf Gallery (2017), 'Orbiter and Sonata' with Michael Janssen Gallery, Berlin (2016), and 'Apropos' at the Institute of Contemporary Arts Singapore (2012); the Busan Biennale (2014) and the Singapore Biennale (2013).

He teaches at the LASALLE College of the Arts and runs bulanujung, an experimental curatorial platform.

Selected Works\_

HARIDAS  
CONTEMPORARY



**Crossing** (2023) by Jeremy Sharma  
50 x 40 cm  
Oil on Linen

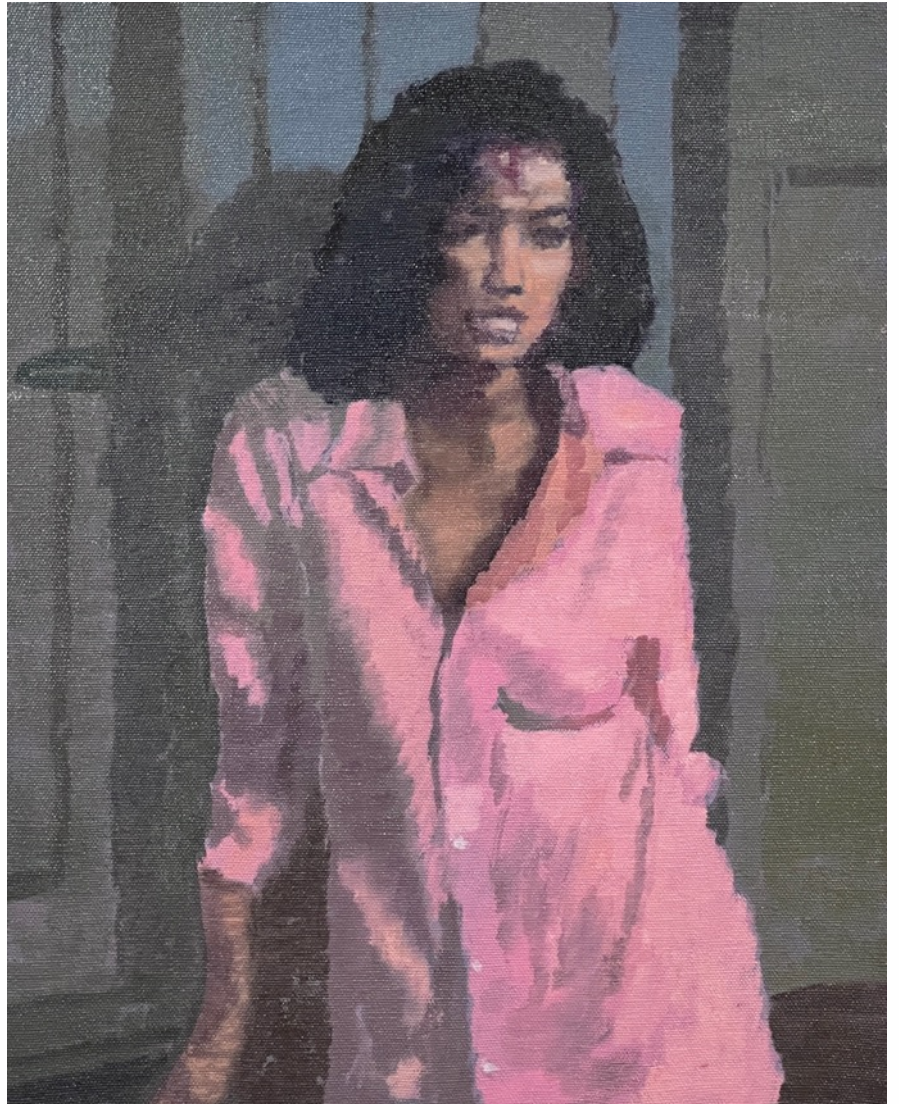


HARIDAS  
CONTEMPORARY



**Coral** (2023) by Jeremy Sharma  
50 x 40 cm  
Oil on Linen

HARIDAS  
CONTEMPORARY



**Perempuan (2023)** by Jeremy Sharma  
50 x 40 cm  
Oil on Linen